

VIVA-FORUM L

Forum L allows you to create dynamic meeting areas which encourage relationships between colleagues, favour team productivity, ensure that everyone is comfortable and facilitate the transmission of knowledge.



1



2



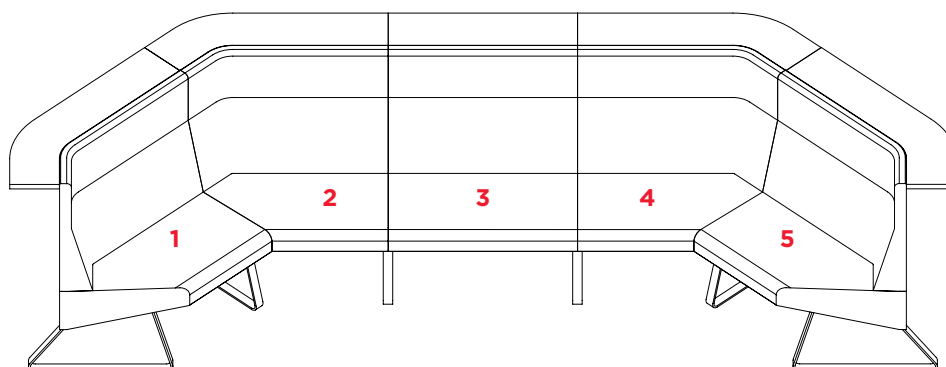
OPTIONAL FEATURES

1. Counter-style ledge along the back with a thickness of 25 mm and a height of 1050 mm.
2. Choice of different fabric finishes on seat and backrest.

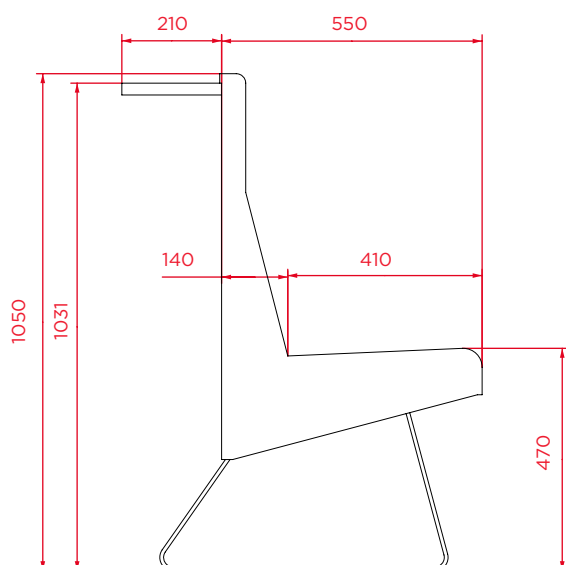
VIVA-FORUM L

TECHNICAL CHARACTERISTICS

- Angled and straight modules.
- Start, middle and end modules.
- The angled modules can be fitted on the left or the right of the seated position.



1. Angled module, Initial right module right angled with cantilever table.
2. Angled middle module, right angled, with cantilever table.
3. Straight middle module, with cantilever table.
4. Angled middle module, left angled, with cantilever table.
5. Angled final left module , left angled, with cantilever table.



VIVA-FORUM L

DESCRIPTION

REAR PANEL

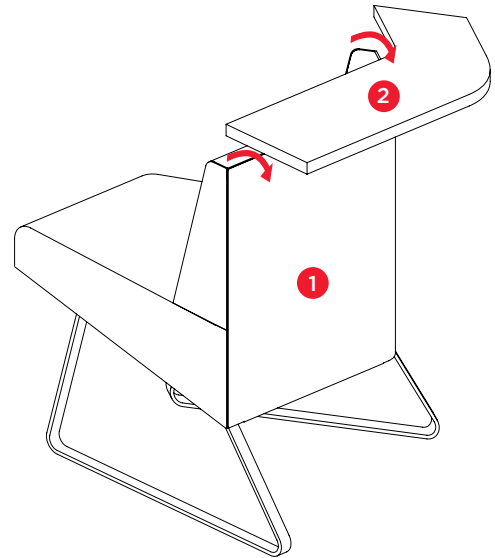
Made of 1-mm thick, formed sheet steel, screwed onto the seat and clipped onto the backrest. (**1**)

With the option of fitting a counter onto the outer face of the panel with supports (**2**).

SEAT

Structure made of several pieces of 19-mm thick chipboard, joined with angle brackets and self-tapping screws.

Lined with dual density foam: 35 kg/m³ and 150 kg/m³, with an overall thickness of 60 mm. The fabric finish of the entire assembly is to order, and the underside is lined.



BACKREST

Structure in 30-mm thick poplar plywood, lined with foam with a density of 35 kg/m³, all with fabric finish to order and attached to the seat with 3-mm thick, folded steel brackets.

LEGS

The floor support consists of a calibrated steel-bar leg, coated with oven-polymerised epoxy powder. Felt glides to prevent marking.

The entire structure is degreased, washed and phosphated before being coated with 60/80µm epoxy powder and then polymerised. The powder coating complies with the current reaction to fire standard UNE 23827-90.

VIVA-FORUM L

GAMA

ANGLED MODULE FORUM L WITH LEFT / RIGHT ANGLED

Independent module



Without cantilever table

Initial right module



Middle module



Final left module

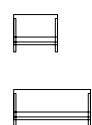


With cantilever table



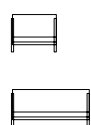
STRAIGHT MODULE W-80 / 140

Independent module

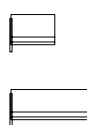


Without cantilever table

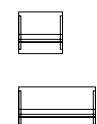
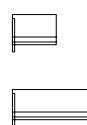
Initial right module



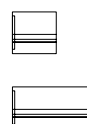
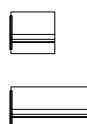
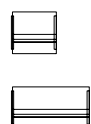
Middle module



Final left module



With cantilever table



HEXAGONAL TABLES

D-75 W-150 / 175 / 210



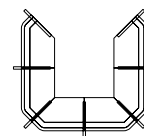
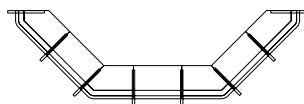
D-80 W-150



The option with flush legs to the wall will not allow the cantilevered table.



Without cantilever table



With cantilever table

